



# MANGO ANNEXE

This 3-bedroom, 1-bathroom annex offers 80 m<sup>2</sup> of living space, featuring a spacious living room, modern kitchen, and 23 m<sup>2</sup> garage — ideal for families seeking comfort.



Product Name	MANGO
Category	Annexe
Size	W 16.8x10.2m   H 3.9m
Roof area	150.7 m <sup>2</sup>
Living space	80.4m <sup>2</sup> + 22.9m <sup>2</sup>
Insulation	Insulated A+   SIPS 174mm   SIPS 224mm
Product type	Self Build KIT



## EXCELLENT INSULATION

The insulation capacity is elevated by up to 50% compared to conventional building materials



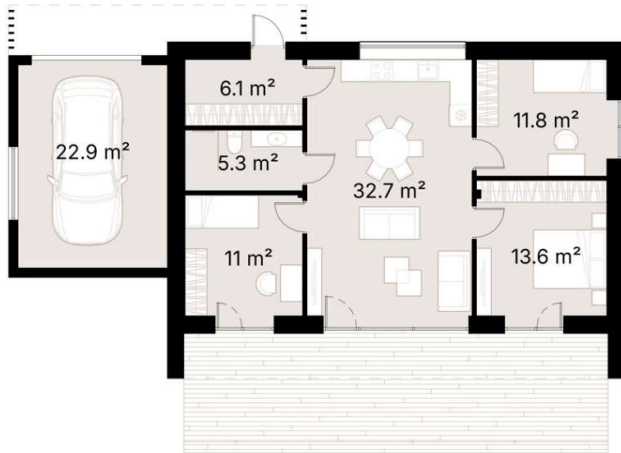
## PREMIUM MATERIALS

Our kits are comprised of top-tier components and materials, ensuring superior quality and finishes



## SUSTAINABILITY

Our KITS are made from renewable materials and produce less waste than traditional construction methods



Discover this practical 3-bedroom, 1-bathroom annex with a garage, offering 80 m<sup>2</sup> of well-utilized living space—ideal for families or individuals seeking a blend of comfort and functionality.

The 32.7 m<sup>2</sup> living room is the heart of the home, featuring large windows that invite natural light and provide a connection to the outdoors. The adjacent kitchen is thoughtfully designed to make meal preparation both efficient and enjoyable.

The three bedrooms are comfortably sized, with the master bedroom providing a generous 13.6 m<sup>2</sup> retreat. Each bedroom offers a tranquil space for rest, work, or hosting guests.

The modern single bathroom is conveniently situated, meeting all your essential needs.

With the added benefit of a 23 m<sup>2</sup> garage, this home combines practical features with a welcoming living environment, perfect for various lifestyles.

## SPECIFICATION

Dimensions	W 16.8x10.2m   H 3.9m
Category	Annexe
Roof area	150.7 m <sup>2</sup>
Living space	80.4m <sup>2</sup> + 22.9 m <sup>2</sup>
Exterior Walls	SIPS 174mm, EPS Carbon treated, 0,031 W/mK, OSB3
Roof structure	SIPS 224mm, EPS Carbon treated, 0,031 W/mK, OSB3
Internal walls	-
Windows / doors	PVC Double-glazed, 6-chamber profile, Anthracite grey (both sides)
Roof cover	Elevate's RubberGard™ EPDM, 1.14mm thick, fully adhered system
Exterior trim	Natural Pine/Spruce trim, sanded to a smooth finish Low-maintenance Thermowood Pine/Spruce trim, sanded to a smooth finish (optional) T&G Low-maintenance Iron Sulphate coated Larch timber cladding (optional)
Breathable membrane	DuPont™ Tyvek® Housewrap
Exterior sills	Steel, Anthracite grey
Parapet Flashing	Steel, Anthracite grey
Interior covering / Flooring / Skirting / Interior sills	-
Foundation (not included)	Any type of foundation can be used: Concrete Pad / Concrete Base / Ground Screw / etc.
Water Supply and Sewerage, Electrical installation, HVAC (not included)	Any type of Water Supply /Sewerage, Electrical installation, HVAC systems must be done ensuring local requirements