



# PEACH ANNEXE

Discover this 3-bedroom, 1.5-bathroom annex with 102 m<sup>2</sup> of space, a spacious living area, versatile bedrooms, and modern design—ideal for families or extra annexe.



Product Name	PEACH
Category	Annexe
Size	W 16.7x8.4m   H 4.1m
Roof area	140.9 m <sup>2</sup>
Living space	101.8 m <sup>2</sup>
Insulation	Insulated A+   SIPS 174mm   SIPS 224mm
Product type	Self Build KIT



## EXCELLENT INSULATION

The insulation capacity is elevated by up to 50% compared to conventional building materials



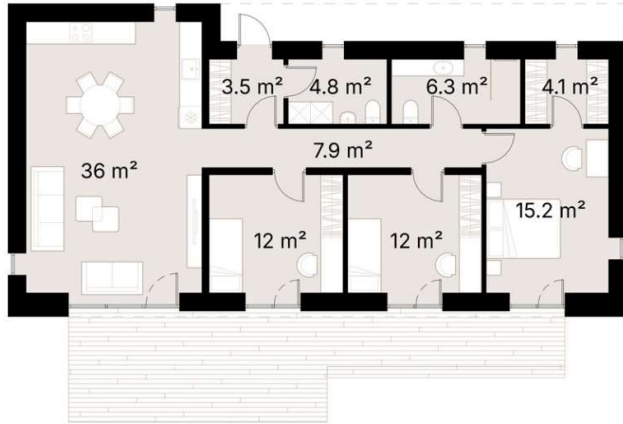
## PREMIUM MATERIALS

Our kits are comprised of top-tier components and materials, ensuring superior quality and finishes



## SUSTAINABILITY

Our KITS are made from renewable materials and produce less waste than traditional construction methods



Explore the generous space of this 3-bedroom, 1.5-bathroom annex, offering 102 m<sup>2</sup> of thoughtfully designed living space—perfect for growing families or those seeking extra room.

The expansive 36 m<sup>2</sup> living room serves as the central hub of the home, featuring large windows that bathe the area in natural light and provide delightful views of the surroundings. The open-plan kitchen and dining area are designed to facilitate easy meal preparation and social gatherings.

The three bedrooms are spacious and versatile, with the master bedroom providing a tranquil 15.2 m<sup>2</sup> retreat, complete with a walk-in closet for ample storage. The additional bedrooms are ideal for children, guests, or a home office.

With 1.5 modern bathrooms, this annex ensures comfort and convenience for every resident. Combining ample space with stylish design, this home offers a flexible and comfortable living environment that adapts to your needs.

## SPECIFICATION

Dimensions	W 16.7x8.4m   H 4.1m
Category	Annexe
Roof area	140.9 m <sup>2</sup>
Living space	101.8 m <sup>2</sup>
Exterior Walls	SIPS 174mm, EPS Carbon treated, 0,031 W/mK, OSB3
Roof structure	SIPS 224mm, EPS Carbon treated, 0,031 W/mK, OSB3
Internal walls	-
Windows / doors	PVC Double-glazed, 6-chamber profile, Anthracite grey (both sides)
Roof cover	Elevate's RubberGard™ EPDM, 1.14mm thick, fully adhered system
Exterior trim	Natural Pine/Spruce trim, sanded to a smooth finish Low-maintenance Thermowood Pine/Spruce trim, sanded to a smooth finish (optional) T&G Low-maintenance Iron Sulphate coated Larch timber cladding (optional)
Breathable membrane	DuPont™ Tyvek® Housewrap
Exterior sills	Steel, Anthracite grey
Parapet Flashing	Steel, Anthracite grey
Interior covering / Flooring / Skirting / Interior sills	-
Foundation (not included)	Any type of foundation can be used: Concrete Pad / Concrete Base / Ground Screw / etc.
Water Supply and Sewerage, Electrical installation, HVAC (not included)	Any type of Water Supply /Sewerage, Electrical installation, HVAC systems must be done ensuring local requirements